

New York State Energy Planning Board

Electricity System Modeling Update

Karl Michael

Program Manager, Energy Analysis

NYSERDA

May 7, 2012

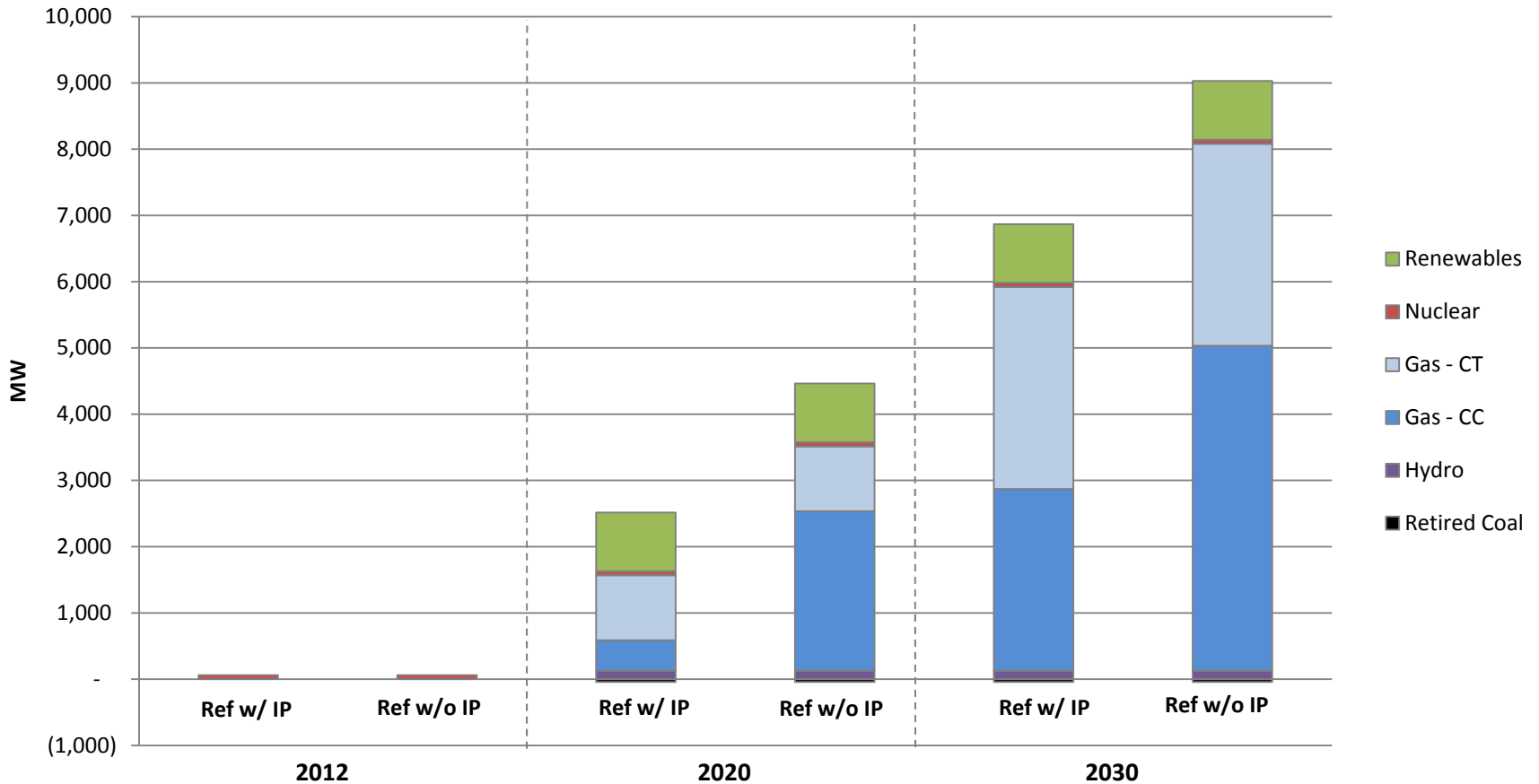
Electricity Modeling Updates since April Board Meeting

- Load forecasts from NYISO, PJM and ISO-NE
- Planned builds and retirements
- Transmission transfer limits
- Natural gas prices
- Oil use
- RPS assumptions

Preliminary Reference Cases

Cumulative MW Capacity Additions (Economic-Based)

Based on NYISO Planning Assumptions for Load, Capacity, and Transfer Limits

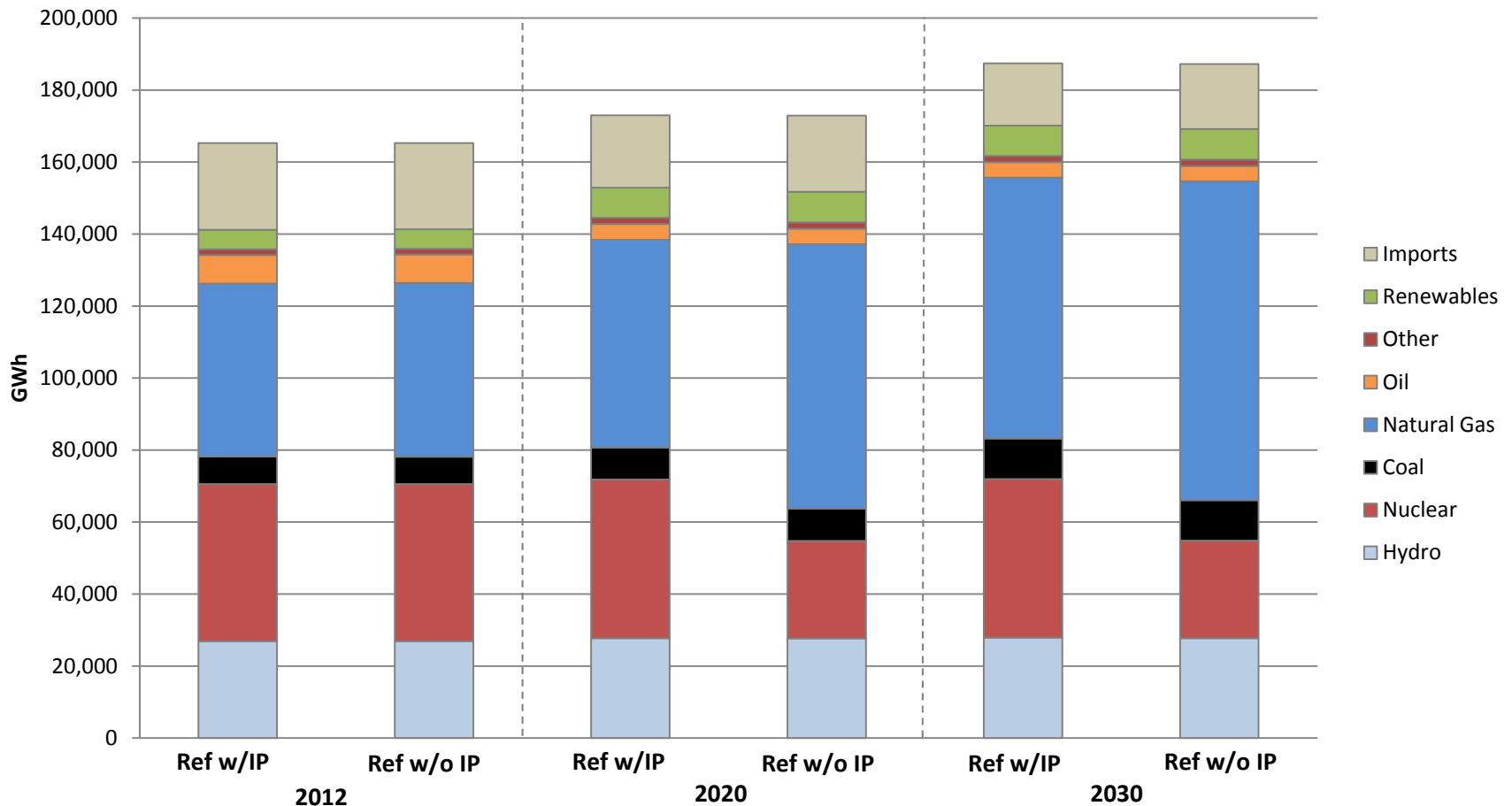


*Based on IPM Output dated 04.23.12

Preliminary Reference Cases

Generation Mix (GWh)

Based on NYISO Planning Assumptions for Load, Capacity, and Transfer Limits

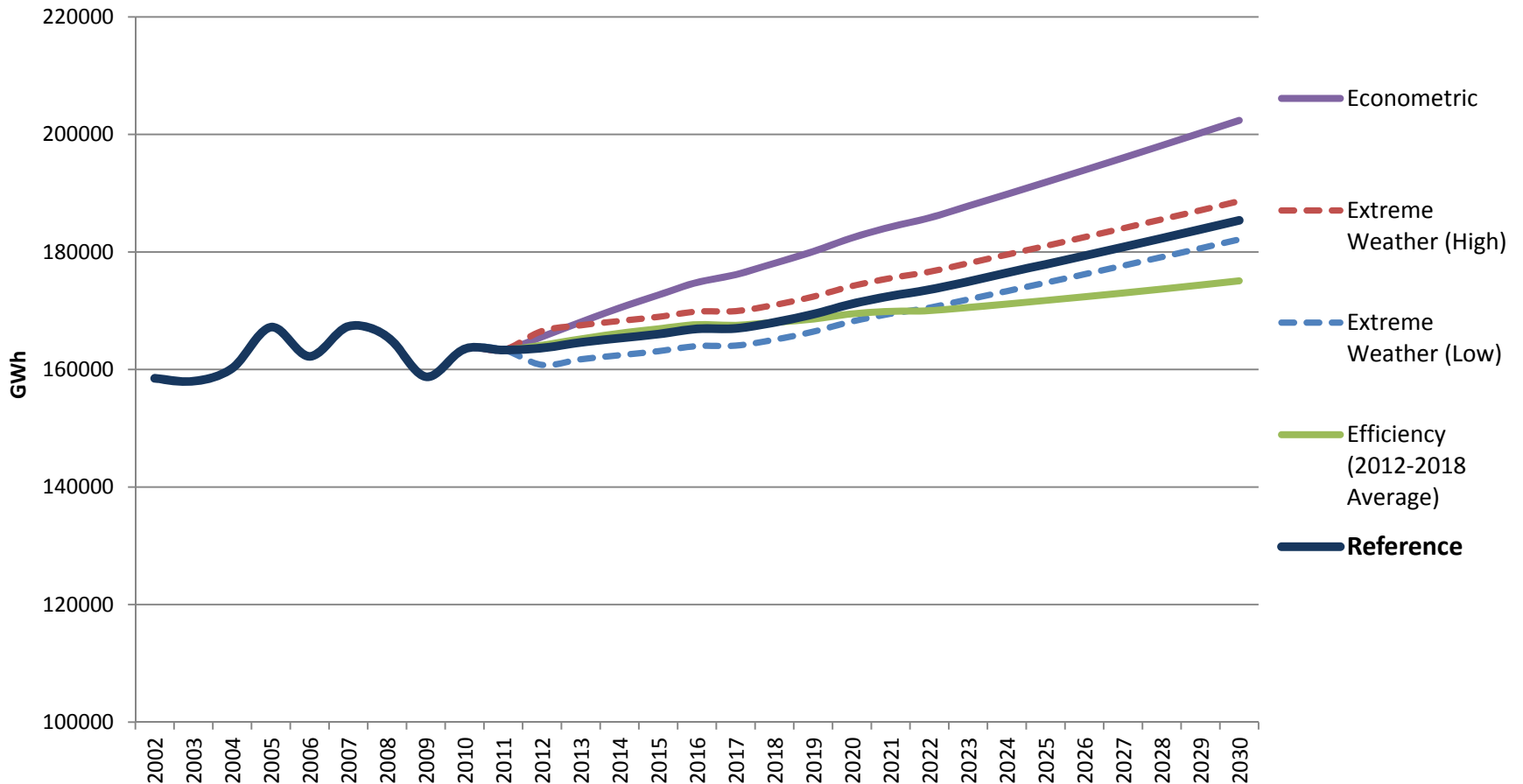


* Based on IPM Output dated 04.23.12

Possible Model Runs

- Higher/Lower load than NYISO planning forecast
- Higher/Lower natural gas prices
- Additional increment(s) of energy efficiency
- Additional increment(s) of renewable resources
- Additional transmission capabilities
- Load growth due to electric vehicle penetration
- Specific unit additions, repowering or retirements

Possible Model Run Examples: Higher and Lower Load



Possible Model Run Examples: Higher and Lower Gas Prices

